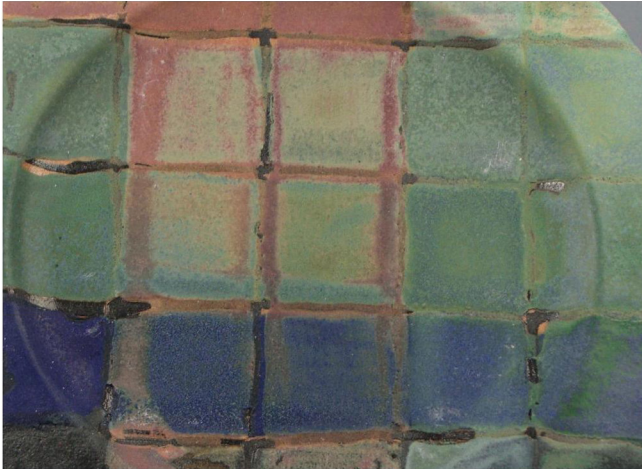


CRAFTSMAN-STYLE GLAZING

Craftsman-style glazing makes use of warm earthy colors that can compliment each other and yet maintain their own integrity. Georgies glazes that fall into this category have a soft matte finish, are food-safe, and non-toxic.



The specific glazes in the **Sculptural/Textural Glaze** line are:

- GLW08 Copper Patina
- GLW25 Aqua Gemstone
- GLW36 NW Woods Green Matte
- GLW37 Pure White Matte
- GLW39 Vanilla Cream Matte
- GLW40 Golden Raspberry Matte
- GLW41 Cool Lime Matte
- GLW42 Blueberry Matte
- GLW43 Bright Blue Matte
- GLW47 Kalamata Black

Although the specific colors that are listed above are the heart of the craftsman series, all of Georgies glazes interact well with each other. So, if you want a bit of a glossy highlight, go ahead and include a glaze from our gloss line!



DECORATIVE DESIGN PAINTING

This is a food-safe technique. You will need:

BASE GLAZE - in this case, we used GLW39 Vanilla Cream Matte. The base glaze is your full glaze treatment and you will need more of this glaze than any of the others. On ^04 bisque, brush on 2-3 coats as smoothly as possible.

DESIGN GLAZES -

- GLW40 Golden Raspberry
- GLW41 Cool Lime Matte
- GLW42 Blueberry Matte
- GLW43 Bright Blue Matte

Each of these glazes are painted onto the surface of the base coated piece. When 'painting' the design glazes, it's OK to think like a painter ... double load color onto your brush ... and apply the glaze in lighter and heavier applications to vary the effect. Finally ... if you want to create a black line, use Mayco EZ012 Black Stroke & Coat applied with a liner brush.

CRAFTSMAN-STYLE TILE

You will need ...

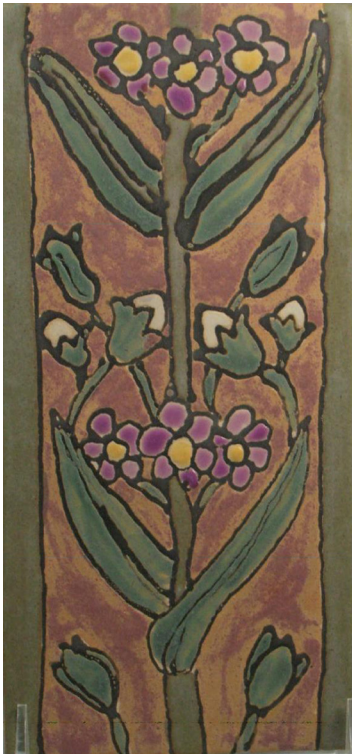
- WXB Black Wax Resist
- Applicator bottle for the Wax Resist

Georgies Glazes:

- GLW36 NW Woods Green Matte - bands along edges & stems
- GLW37 Pure White Matte - buds
- GLW40 Golden Raspberry - background
- GLW41 Cool Lime Matte - leaves
- PG639 Hot Orchid - Flowers
- PG643 Gold Satin (discontinued) - flowers

Working on ^04 bisque, apply the black wax resist to all the lines that you want to be part of your design element. The wax creates a resist and leaves a dry matte surface after it is fired. This is not food safe, as it doesn't seal the surface.

After your wax has dried, you need only 'float' your glaze color into the desired areas. The wax holds the glaze in place retaining your design.



Georgies
CERAMIC AND CLAY CO.

756 NE Lombard St • Portland OR 97211 • 503-283-1353 • www.georgies.com